

4

3

2

1

NOTES: UNLESS OTHERWISE SPECIFIED

- 1 INTERPRET DRAWING IN ACCORDANCE WITH ASME Y14.5-1994.
- 2 MATERIAL: C14500 COPPER, 1/2 HARD TEMPER.
- 3 MATERIAL: C11000 COPPER, 1/2 HARD TEMPER
- 4 FINISH: POST-PLATED, .000300-.000500 [7.62-12.7 MICRONS] THICK MATTE TIN (LEAD FREE) OVER .000100-.000200 [2.54-5.08 MICRONS] THICK NICKEL.
- 5 ALL DIMENSIONS APPLY AFTER PLATING.
- 6 FILLETS & RADII PERMITTED AT CORNERS, R.005 [0.13] MAX.
- 7 ALL SHIPMENTS MUST BE TESTED FOR SOLDERABILITY PER IPC/EIA/JEDEC J-STD-002, TEST A, CATEGORY 3.
- 8 TAPE AND REEL PACKAGING PER EIA-STD-481.

PART NO.	MAT'L	"A"	"B"	"C"	"D"	"E"	"F"	"G"	PACKAGING	
									REEL SIZE	REEL QTY
9-0028-04-T	NOTE 2	Ø.060±.002 [1.52±0.05]	Ø.110 [2.79]	.237±.010 [6.02±0.25]	.065 [1.65]	.070 [1.78]	Ø.070±.003 [1.78±0.08]	.015±.001 [0.38±0.03]	22.0 [558.8]	4,000±15%
9-0028-24-T		Ø.060±.002 [1.52±0.05]		.237±.010 [6.02±0.25]					15.0 [381.0]	1,800±15%
9-0028-25-T	NOTE 3	Ø.060±.002 [1.52±0.05]	Ø.110 [2.79]	.292±.010 [7.42±0.25]	.120 [3.05]	.125 [3.18]	Ø.070±.003 [1.78±0.08]	.015±.001 [0.38±0.03]	15.0 [381.0]	1,500±15%
9-0028-26-T		Ø.040±.002 [1.03±0.05]		Ø.088±.004/-0.06 [2.23+/-0.10/-0.15]					.292±.010 [7.42±0.25]	13.0 [330.2]

REV	REVISION RECORD	ECN	BY	APVD	DATE
A	INITIAL RELEASE	503487	GLT	CJ	07/28/04
B	UPDATED REEL DIA. PKG QTY & ILLUST.	503622	GB	GB	11/05/04
C	UPDATED PLATING TO 300-500 µ"	504078	GB	GB	08/30/05
D	REVISED PER EWR 104850	504357	BILL	PVB	02/03/06
E	ADDED P/N 9-0028-24-T	504384	BILL	PVB	02/16/06
F	ADD P/N'S PER EWR105550	505095	HR	PVB	8/1/2007
G	REVISE PER CDR302203	505228	HR	PVB	12/21/07
H	CHG .260 TO .292	505574	HR	PVB	10/7/2008
J	CHG'D PER EWR106328	505653	DJA	HR	01/06/09

F

F

E

E

D

D

C

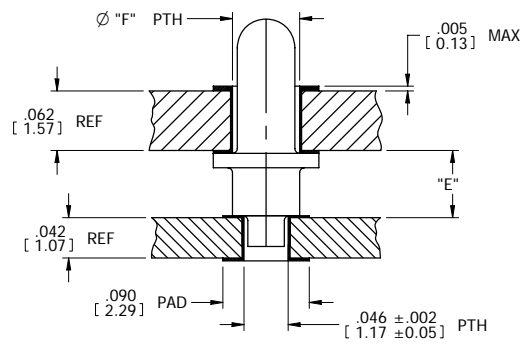
C

B

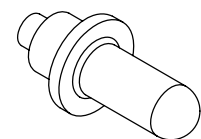
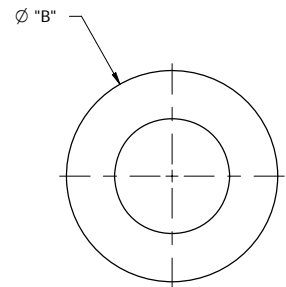
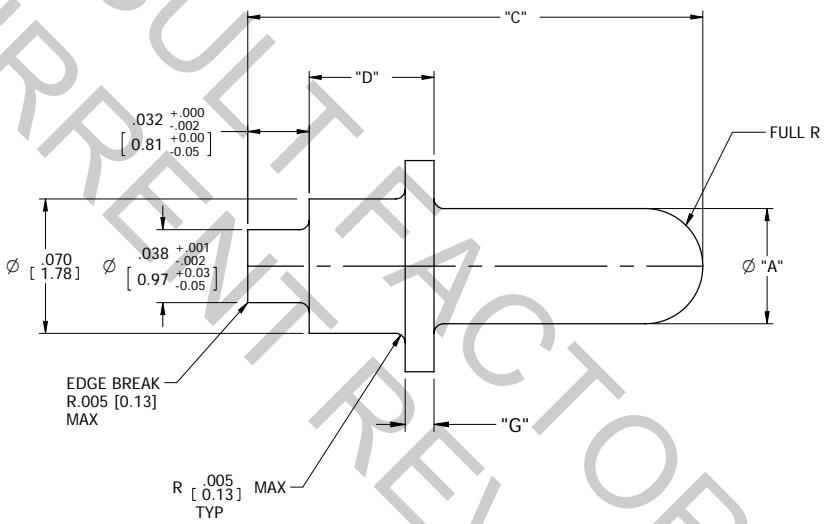
B

A

A

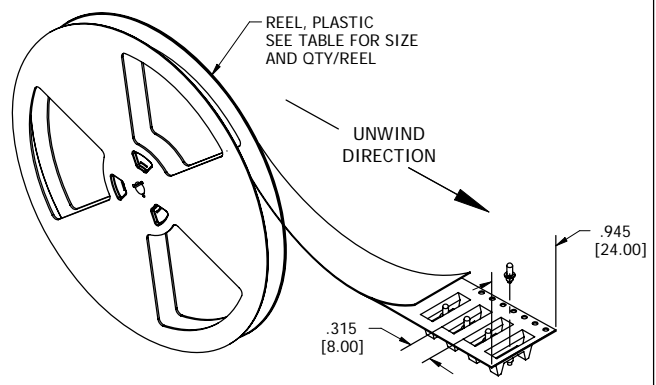


APPLICATION VIEW



CUSTOMER DRAWING

TAPE AND REEL ORIENTATION



TOLERANCES UNLESS OTHERWISE SPECIFIED (DIMENSIONS IN INCHES)		Autosplice, Inc. 10121 Barnes Canyon Rd. San Diego, CA 92121-2725. 858.535.0077	
DECIMAL: .XX = ±.005 (.XX) = ±[0.13] .XXX = ±.003 (.XXX) = ±[0.08]	ANGULAR: ± 2°	DESIGNED BY: G. Tomczak	DATE: 07-15-04
<p>The drawing and the information set forth hereon are the property of Autosplice, Inc. and are to be held in trust and confidence. Publication, disclosure, or use for any purpose not expressly authorizing in writing by Autosplice, Inc. is prohibited.</p>		ENGINEERED BY: G. Tomczak	DATE: 07-15-04
<p>Autosplice, Inc. is a registered trademark of Autosplice, Inc.</p>		TITLE: HYBRID PIN, Ø.060 [1.52]/.040 [1.03]	REVISION: J
SIZE: C	FORM NO: OAE89	DRAWING NUMBER: C9-0028-[]]-T	REVISION: J
SCALE: 20X		PAGE NO: C9-0028-[]]-13.001	MODEL NO: 9-0028-04
		SHEET 1 OF 1	

4

3

2

1